

EM-6903 | Antenna, Vertical Whip



Description

EM Antennas' EM-6903 Vertical Whip Antenna is a collapsible whip antenna for use with receivers or spectrum analyzers. The antenna collapses to a small length for ease of packing and extends for use at VHF as well as UHF frequencies.

The EM-6903 antenna has a right-angle (90-degree) BNC connector.

Specifications

Electrical

Frequency Range:	VHF and UHF
Polarization:	Linear, Vertical
Impedance:	Varies with length and frequency. 50Ω, Nominal when adjusted to resonance.
Radiation Pattern:	Omni-Directional
Connector:	BNC (Male) 90 Degree (EM-6903)

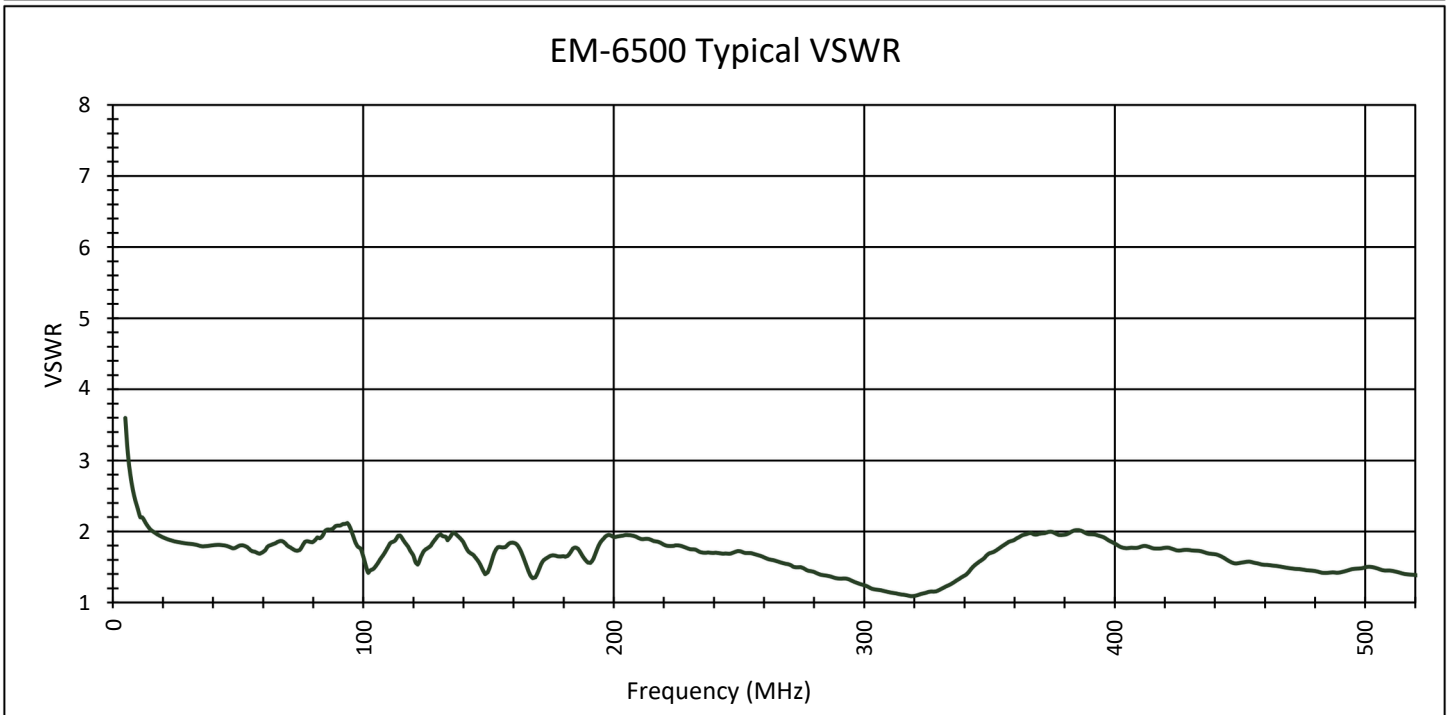
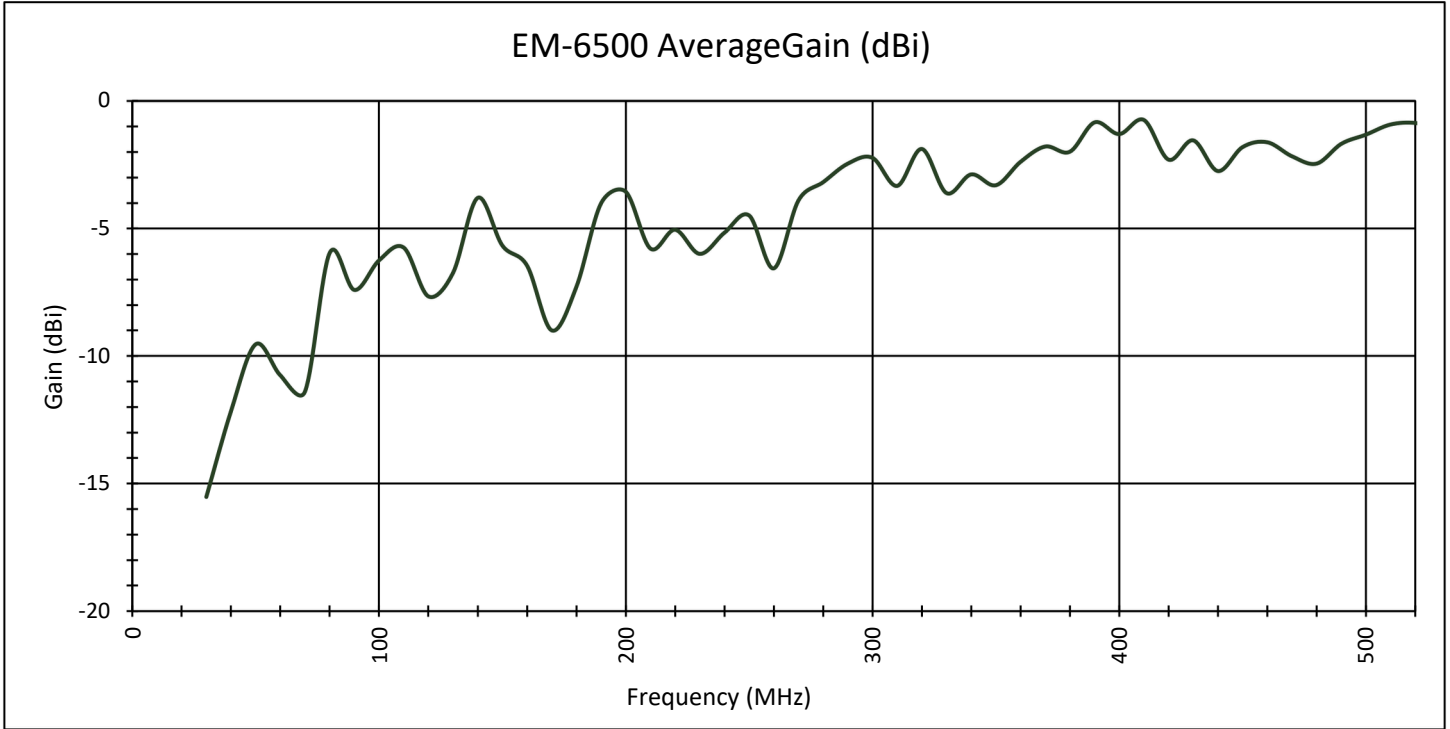
Mechanical

Length:	Minimum: 20.3 cm (8 in.) Maximum: 152.4 cm (60 in.)
Antenna Type:	Vertical Whip
Color Options:	Unfinished Metal

Specifications subject to change without notice, unless otherwise specified. Product is manufactured in Johnstown, NY, U.S.A.



EM-6500 | Antenna, Wideband Whip /Monopole



Gain measured at 10m separation using identical antennas positioned directly above ground plane. Average gain is shown.

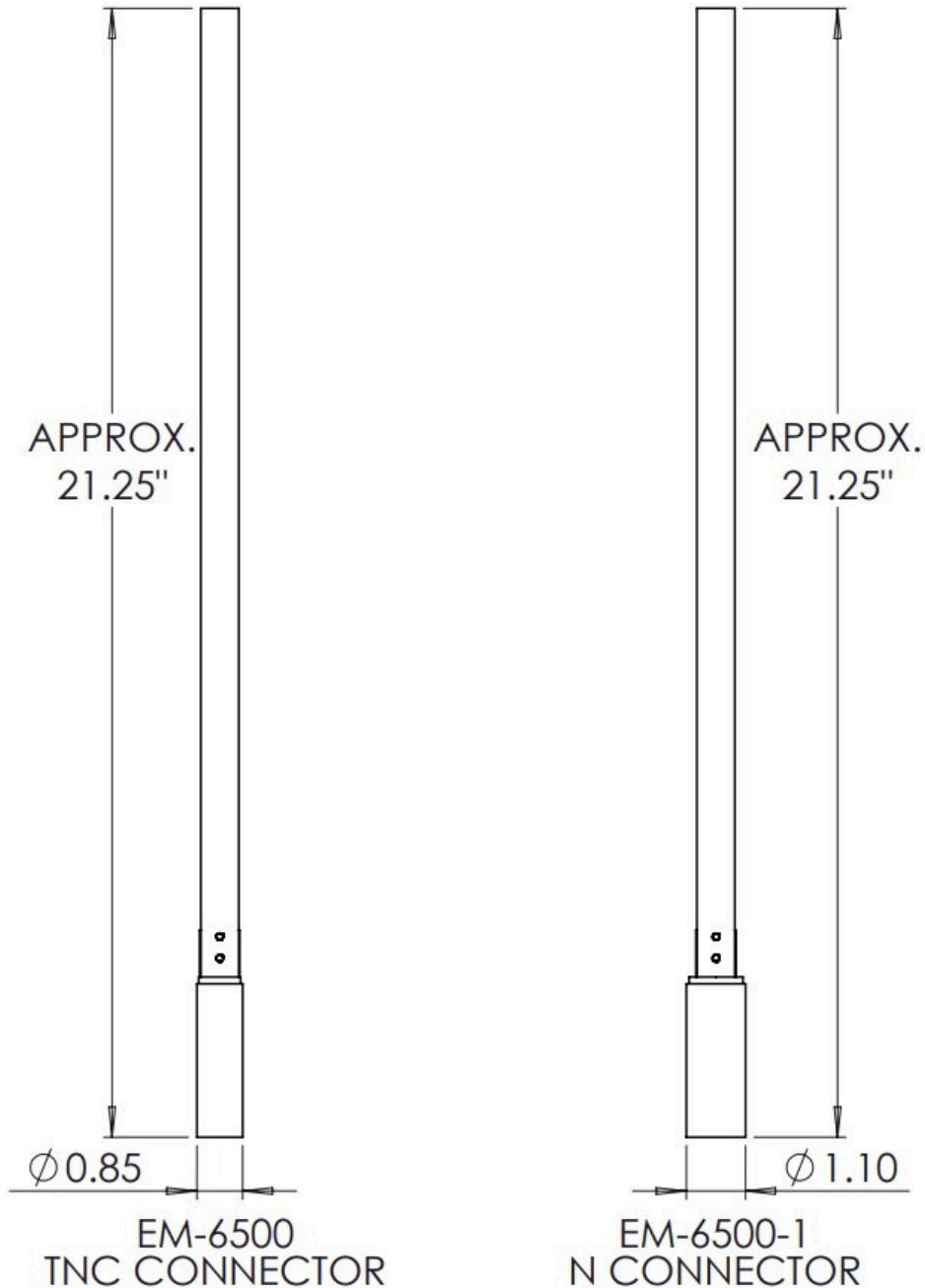
VSWR measured directly on VNA Port without cable.

Data shown is typical, not guaranteed.

Specifications subject to change without notice, unless otherwise specified. Product is manufactured in Johnstown, NY, U.S.A.



EM-6500 | Antenna, Wideband Whip / Monopole



ENGINEERING DRAWING

Specifications subject to change without notice, unless otherwise specified. Product is manufactured in Johnstown, NY, U.S.A.



EM-6500 | Antenna, Wideband Whip / Monopole



EM-6500-1
Unfolded/Deployed
Configuration



EM-6500-1
Folded Configuration



EM-6500-1
Folded Configuration

Specifications subject to change without notice, unless otherwise specified. Product is manufactured in Johnstown, NY, U.S.A.

